



 **ERVAL**
SINCE 1985

DEMOUNTABLE
WALL SYSTEMS



ABOUT

Nerval Corporation has been in business since 1985. Our 35+ years of experience includes that of design, manufacturing, and installation of various products.

Our mission is to deliver quality products to businesses all over Canada, placing the utmost importance on customer service, while developing our business model to encompass environmental sustainability.

This is what NervalWall accomplishes, through significant waste reduction and the delivery of a superior product to the conventional system.

GENERAL DESCRIPTION



INSPIRE WALNUT

NervalWall is a flexible, full height interior office workspace solution for commercial, government, education, and hospitality projects.

NervalWall is designed with a low-profile aluminum frame structure, which supports single or double glass glazing and panel elements. Our system also makes it very easy to pass power & data lines. Our system retains floor to ceiling glass panels and a seamless, low visibility joint system to produce a structurally solid wall.

NervalWall provides for flexible, contemporary partitioning of working environments. The system is complete with glass sliding or swinging doors.



BLACK

The Clario Series of NervalWall features seamless glass partitions that combine functionality and contemporary elegance - transforming your internal space into a bright, productive workspace. The open concept workspace allows your mind to “breathe”, eliminating the congestion of a mundane, conventional office space.

Make your office a place of positivity and innovation with Nerval’s Clario Demountable Wall System.

Clario features a high level of acoustic performance, with a Sound Transmission Class (STC) of 41, surpassing a traditional wall constructed with metal studs, insulated and finished with drywall (STC of 39). Clario is a truly demountable wall system, which affords you the liberty of modifying your workspace down the road, while keeping waste and labour to a minimum.

Our Clario system is compatible with 10mm glass, as well as 12mm glass.



CHARCOAL



CLARIO - SILVER



INSPIRE WHITE

The Inspire Series of NervalWall offers unlimited design options. Many materials can be used as panels in the NervalWall System - laminated MDF board, whiteboards, glass, and many other panel options can be configured in unlimited combinations.

**INSPIRE BLACK**

Imagine integrating whiteboards directly into your office space. Outline your plan, keep it in the front of your mind, and execute. Optimize your productivity with Nerval's Inspire Demountable Wall System.

Our Inspire system is compatible with 6mm glass. Clear glass, diffused glass and glass film options are available.



INSPIRE CHARCOAL



INSPIRE - SILVER



INSPIRE SEAMLESS



INSPIRE SEAMLESS SILVER

Nerval's Inspire Seamless Series allows for perfect clarity, eliminating the need for posts. It is a truly demountable glass wall system. Integrate productivity and clarity into your workspace with Nerval's Inspire Seamless Demountable Wall System.

Our Inspire Seamless system is compatible with 8mm glass.

The Inspire Seamless Series of NervalWall offers unlimited design options. Like the Inspire Series, the Inspire Seamless Series allows for any materials to be utilized as panels in the NervalWall System - laminated MDF board, whiteboards, glass, and many other panel options in numerous combinations, with the added benefit of clarity.



CLARIO CHARCOAL

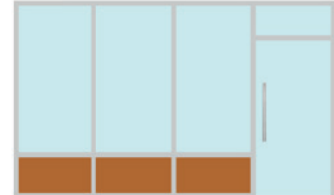
WALL OPTIONS



Configuration 01



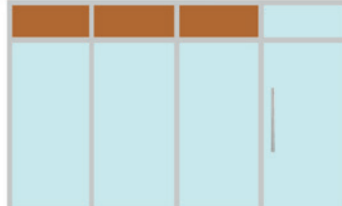
Configuration 02



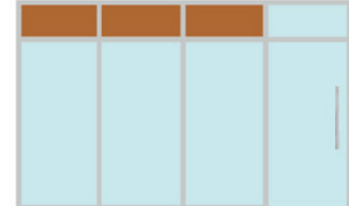
Configuration 03



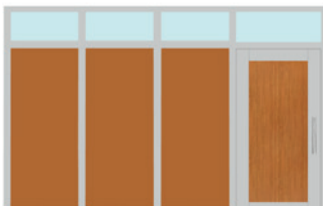
Configuration 04



Configuration 05



Configuration 5A



Configuration 5B



Configuration 06

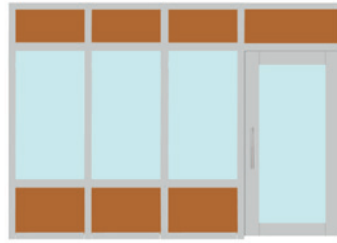


Configuration 07

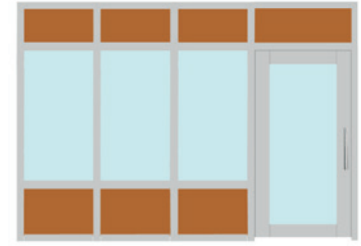
WALL OPTIONS



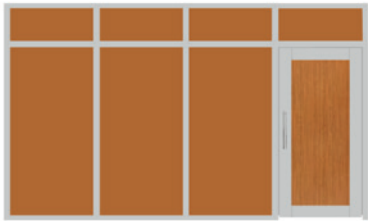
Configuration 08



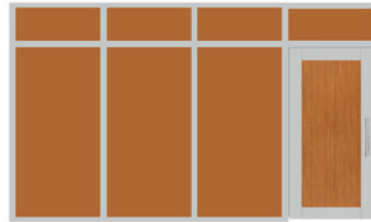
Configuration 09



Configuration 10



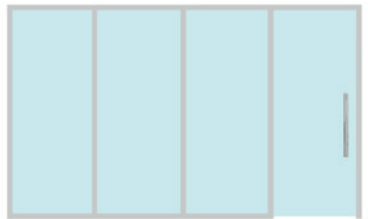
Configuration 11



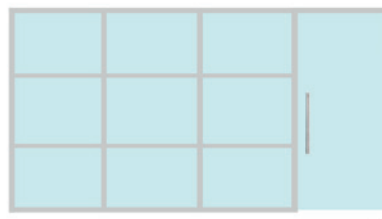
Configuration 12



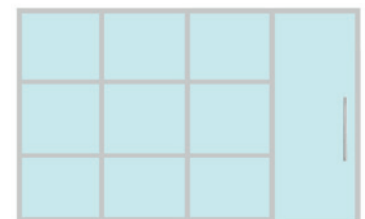
Configuration 13



Configuration 14

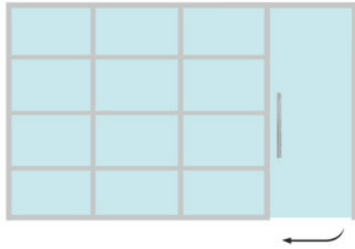


Configuration 15



Configuration 16

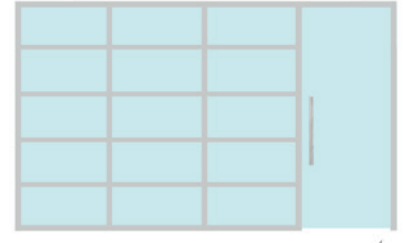
WALL OPTIONS



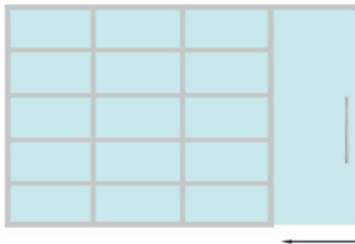
Configuration 17



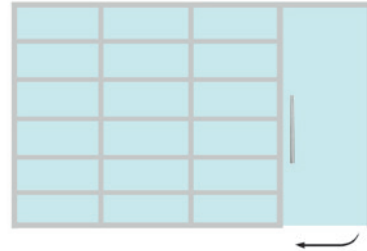
Configuration 18



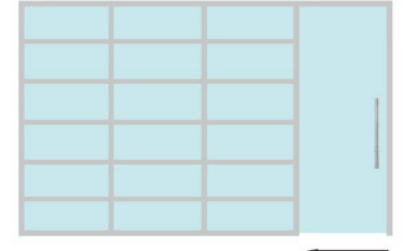
Configuration 19



Configuration 20



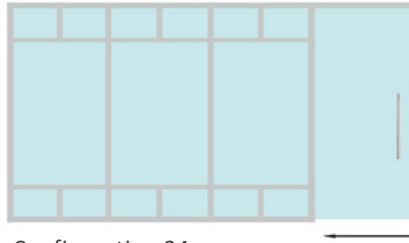
Configuration 21



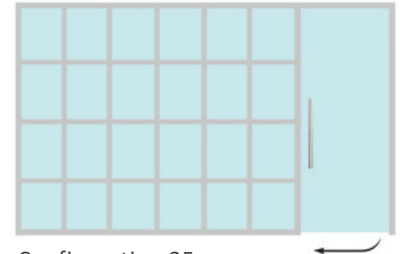
Configuration 22



Configuration 23



Configuration 24

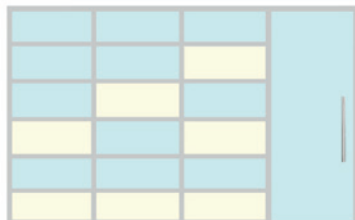


Configuration 25

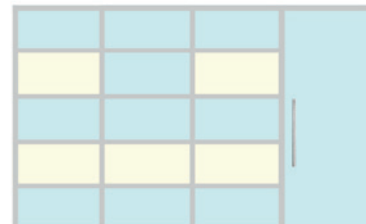
WALL OPTIONS



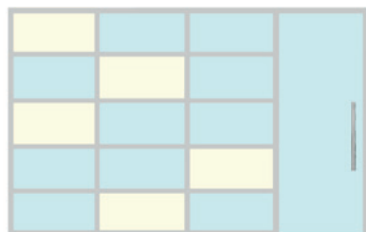
Configuration 26



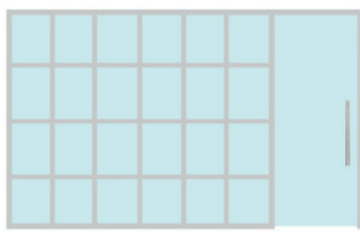
Configuration 27



Configuration 28



Configuration 29



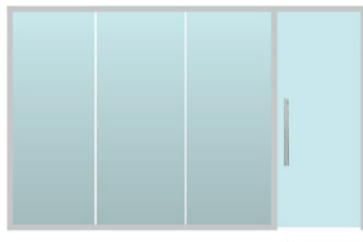
Configuration 30



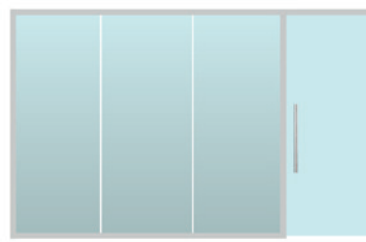
Configuration 31



Configuration 32

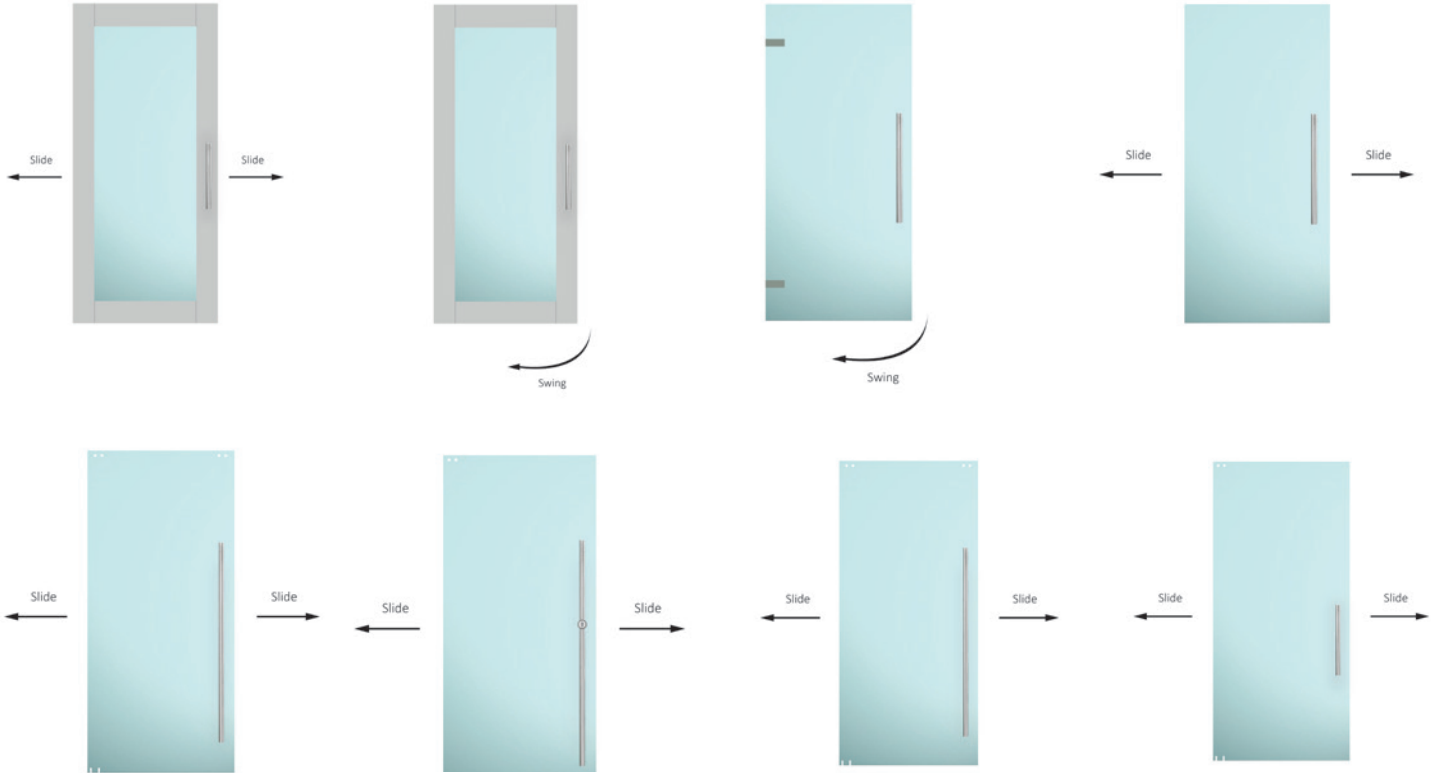


Configuration 33

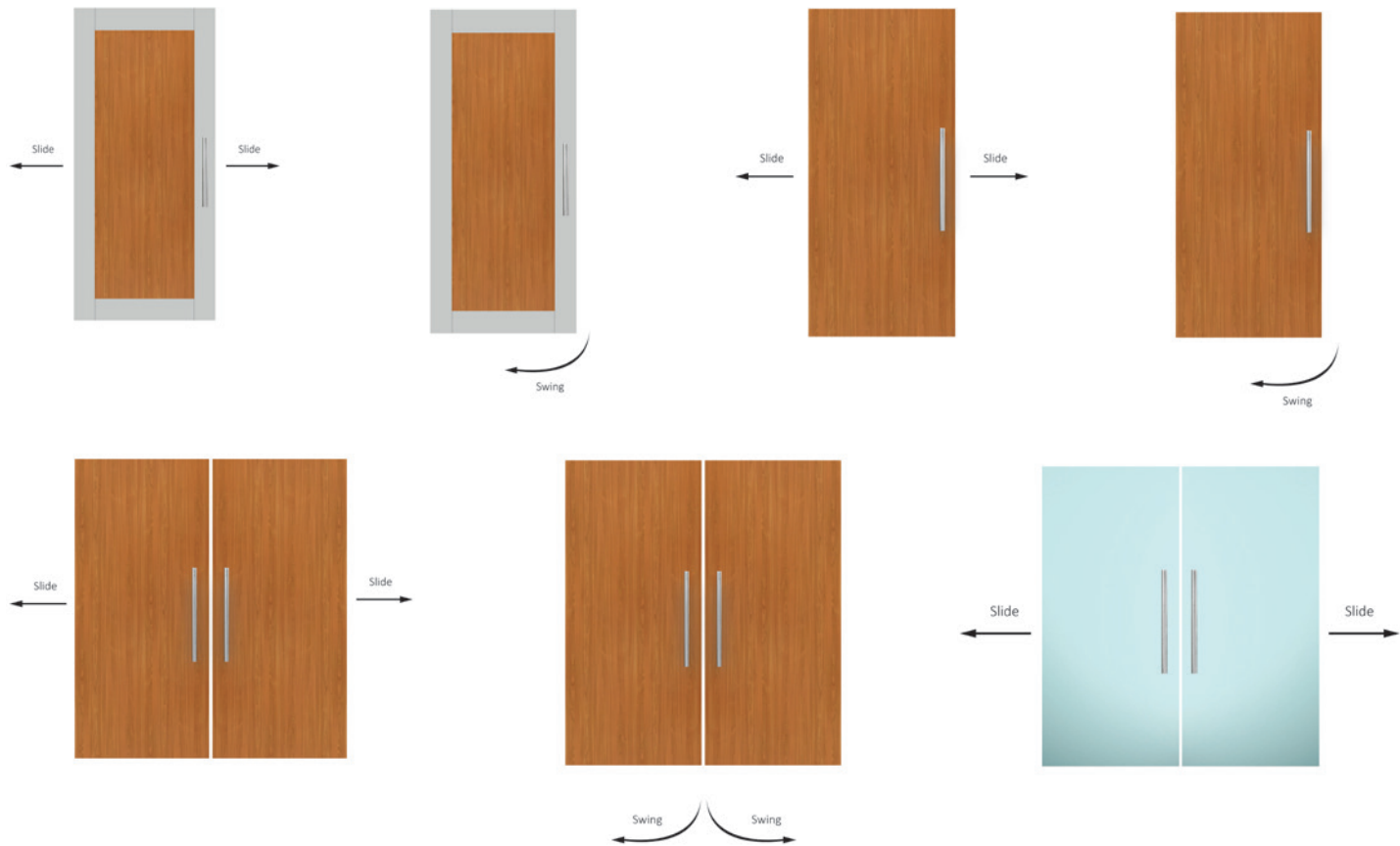


Configuration 34

DOORS



DOORS



Available in 7 different standard colours:



BLACK



WALNUT



CHARCOAL



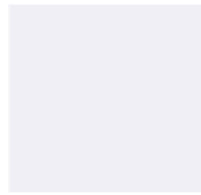
BEIGE



BRONZE



SILVER



WHITE

*Customization to all RAL colours also available.

INSTALLATION:

NervalWall is created with a minimal number of aluminum profiles, enabling simple on-site changes and architectural modifications. The flexibility of the system provides up to 60 mm (2-3/8") of floor to ceiling height adjustment to accommodate uneven floors/ceilings.

Installation and re-configuration produces no drywall dust, paint fumes and construction refuse.

NervalWall installs quickly - our inventory is located in the greater Edmonton area for fast turnaround.

Installation services are provided by Nerval. We strive to bring you value – contact us today to find out how we can be of service to you.

PULL HANDLES



HW-RH1230BN
48"



HW-RH1830BN
48"



HW-RH350BN
14"



HW-RH400BN
16"



HW-RH600BN
24"



HW-RH914BN
36"



HW-RHL1230BN
48" WITH LOCK



HW-RHL1828BN
72" WITH LOCK

PULL HANDLES



HW-ROH1230BN
48"



HW-ROH600BN
24"



HW-SH350BN
14"



HW-SH400BN
16"



HW-SH600BN
24"



HW-SH914BN
36"



HW-ROH914BN
36"



HW-SH1230BN
48"



LARGE INVENTORY AND IN-HOUSE MANUFACTURING



1001 Buckingham Drive, Sherwood Park, Alberta T8H 0X5
TEL: 780 452 1111 | www.nervalcorp.com | EMAIL: info@nervalcorp.com

NERVAL IS REGISTERED TRADE MARK, COPY RIGHT NERVAL CORPORATION 2017